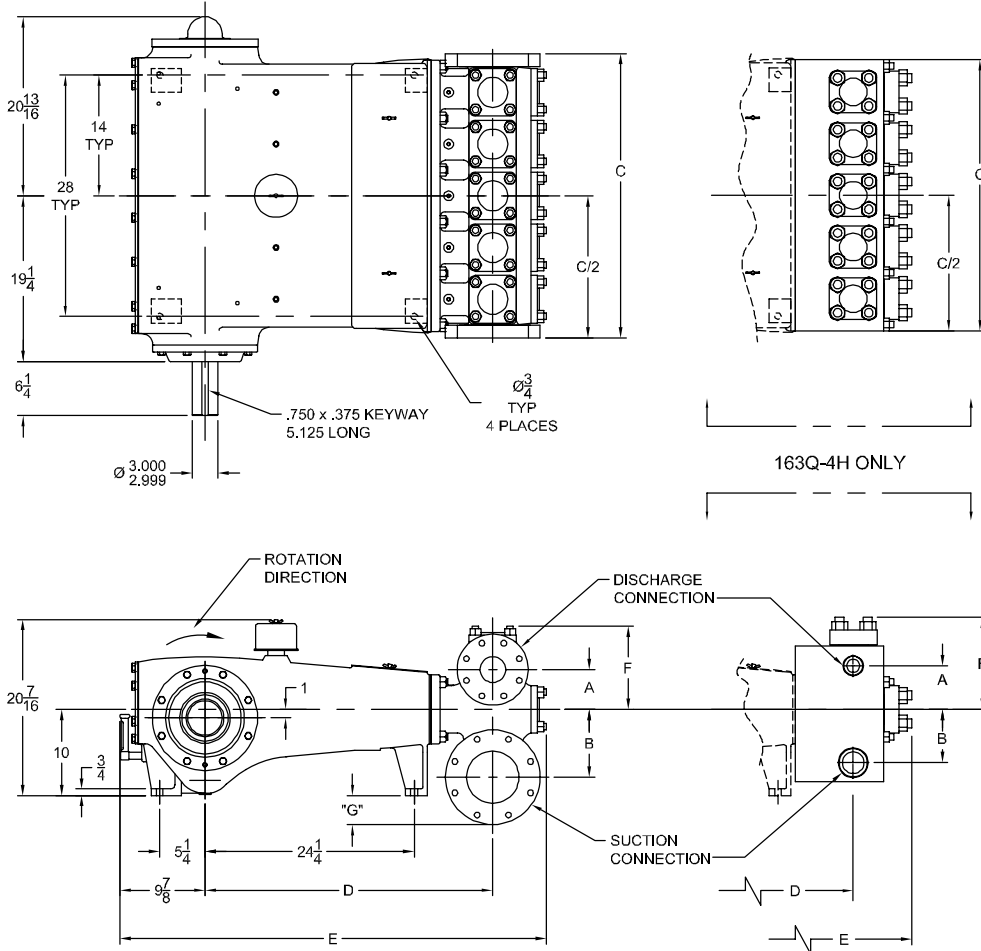


HP165 (163Q-4) Quintuplex Plunger Pump

Specifications



Pump Size:

maximum plunger size x stroke length, in.(mm):
3.375 x 4.500 (85.725 x 114.3)

Rated BHP (kW) at 390 RPM: 163 (121)

Rated plunger load, pounds (kg): 6600 (2994)

Maximum discharge pressure: psi (kPa)

"L" model: 1220 (8408)

"M" model: 2744 (18919)

"H" model: 5378 (37081)

Crankshaft extension:

Diameter, in.(mm): 3.000 (76.2)

Length, in.(mm): 6.25 (158.7)

Keyway width x depth, in.(mm):

3/4 x 3/8 (19.05 x 9.52)

Maximum recommended sheave diameter,
in.(mm): 53 (1346.2)

For larger sizes: **Contact Factory**

Pinion shaft extension,

if gear reducer is supplied, in.(mm)

For belt or chain drive: **Contact Factory**

For direct drive: Diameter: 2.500 (63.5)

Length: 5.000 (127.0)

Keyway width x depth:

5/8 x 5/16 (15.88 x 7.94)

Accessory gear reduction unit:

2.06:1, 2.26:1, 3.60:1, 4.25:1, 4.65:1,

4.88:1, 5.13:1, 5.40:1, 5.69:1

Oil Capacity, gallons (L)

Crankcase: 7 (26.5)

Gear Reducer-varies with ratio:

2.00 to 2.25 (7.57 to 8.52)

Weight, pump only on

wood shipping skids, pounds (kg): 2913 (1322)

Weight varies with pump model

Standard Materials for Fluid Ends:

"L" model

Cast Nickel-Aluminum-Bronze

Cast Duplex Stainless Steel

Plate Carbon Steel

Cast Ductile Iron

"M" model

Cast Nickel-Aluminum-Bronze

Cast Duplex Stainless Steel

Plate Carbon Steel

Forged Nickel-Aluminum-Bronze

"H" model

Forged 15-5 Stainless Steel

Forged/Plate Carbon Steel

| Pump Model | Flange Connections | | Dimensions (Inches) | | | | | | |
|------------|----------------------------|--------------------------|---------------------|--------|--------|--------|----------|--------|--------|
| | Discharge Connection Sizes | Suction Connection Sizes | A | B | C | D | E | F | G |
| 163Q-4L | 3 (76.2)-ANSI 600 FF | 6 (152.4)-ANSI 150 FF | 4 5/8 | 7 7/8 | 33 | 33 3/8 | 49 7/16 | 9 5/8 | 3 3/8 |
| 163Q-4M | 2 (50.8)-ANSI 1500 FF | 4 (101.6)-ANSI 300 FF | 5 1/16 | 5 7/8 | 33 | 33 | 48 11/16 | 9 1/2 | 7/8 |
| 163Q-4H | 2 (50.8)-11 1/2 NPT | 3 (76.2)-8 NPT | 5 1/16 | 6 3/16 | 31 1/2 | 33 | 49 1/4 | 10 3/4 | -1 5/8 |

IEQ Industries

P.O BOX 123 * ADA, * MI 49301 * USA
PHONE 800.544.9053 * FAX 888.796.2653 *
email: info@gaso.com
On the Web at www.gaso.com

NOV NATIONAL OILWELL VARCO